

ASTM D 5 - ISO EN 1426 - IP 49 - DIN 52010 & D 217 - ISO 2137 - IP 50 - DIN 51580 & D 937 - IP 179 - DIN 51579 & D 1321 - ISO 3992 - DIN 51579 & D 1403- ISO 6298 - IP 310

SCOPE

This test method covers determination of the penetration of semi-solid and solid bituminous materials.

FULLY AUTOMATIC MODEL OF PENETRATION VALUE DETERMINATION
- **NPN TECH MODEL** -
- **REF 942734** -

MAIN CHARACTERISTICS

- ✓ Built-in user friendly software
- ✓ 2 separate keyboard : parameters entry / measurement operation
- ✓ Stepper motor for penetration depth as low as 0.01 mm
- ✓ Programmable Penetration time between 0 and 999 min
- ✓ Position recall for routine tests can be set
- ✓ Automatic approach for conductive samples
- ✓ Optoelectronic detection of depth penetration
- ✓ Optional automatic level detection device for bitumens

SCOPE OF DELIVERY

Holder for accessories, magnifying lens and low voltage illuminator, centering guide with screw and nut, power cord, set of 2 fusibles, RS232C output, accessories for automatic level detection for conductive sample comprising probe cable, mini grip & test probe and instruction manual.

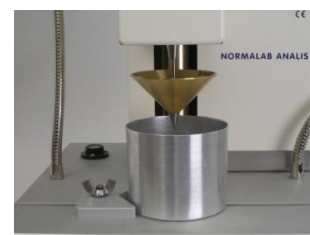
- REF 9417341** Light bulb for ref. 941734
REF 9417342 Flexible light for ref.941734
REF 9417343 Magnifying glass for ref. 941734
REF 4873465 CD-rom with PC application + USB cable - for NPN TECH

ADDITIONAL ACCESSORIES AND OPTIONS

- REF 0195200004** Transfer bath, made of stainless steel with coil
To be connected to a water bath
- REF 0195200005** Transfer bath support made of stainless steel
- REF 29396** Constant temperature water bath (range: -25 to +150°C) - Model RE 1225S -
- REF 941732** Calibration kit for automatic penetrometer
- REF 9417371** Bitumen automatic level detection device
- REF 11504** ASTM thermometer (17 C)
- REF 11532** ASTM thermometer (63 C)
- REF 11533** ASTM thermometer (64 C)



REF. 942734 - NPN TECH



GREASE MODE



REF 941736

CONTACT : sales@normalab.com

NORMALAB FRANCE SAS
ZA Caux Multipôles 1 - F-76 190 Valliquerville
Tel. : +33 232 700 100
Fax : +33 232 704 732

www.normalab.com

NPN TECH leaflet 14rev1

DISTRIBUTED BY

ACCESSORIES AND CONSUMABLES for Bitumen (ASTM D5)

- REF 518063** Standard needle 2.5 g (up to 350 units)
REF 941737 Needle holder 47.5 g (1 supplier with main equipment)
REF 941810 Outfit for penetration of bituminous material, comprising: needle, holder, 50 g weight and 2 containers
REF 941812 Additional weight 100 g
REF 941815 Additional weight 50 g
REF 9418140 Long needle 2.5 g (up to 500 units)
REF 21712 Pack of 300 Sample containers only one use, 55x35 mm
REF 518066 Aluminium container, 55 X 35 mm,
REF 9418181 Aluminium container, 55x70 mm (>200 units)
REF 9418191 Aluminium container, 55x57 mm (up to 500 units)
REF 21932 Standard needle 2.5 g (up to 350 units) with UKAS Certificate



REF 941735

ACCESSORIES (for lubricating greases - ASTM D 217)

- REF 941739** Grease cutter with blade
REF 941736 Outfit for consistency of lubricating grease comprising : cone, holder and container
REF 941737 Cone holder , nickel-plated brass, movable, 47.5 g
REF 941738 Standard cone 102.5 g
REF 9417411 Sample container, 76x63 mm
REF 27322 Spatula 30x200 mm
REF 9417582 Normalab production - GWM CLASSIC- Compact twin-unit automatic grease worker - using electronic counter to control the strokes number. Delivered in standard with 2 plunger plates 51 holes + 2 covers + 2 Shaft and Handle + 2 Vent Cocks. For use on AC 400 V, three-phase, 50 Hz, 16 A, 400x260x500 mm (±29 kg)



REF 941811

ACCESSORIES (for consistency of petroleum - ASTM D 937)

- REF 941735** Outfit for consistency of petroleum, comprising : cone, container and holder
REF 941737 Cone holder , nickel-plated brass, movable, 47.5 g
REF 941738 Standard cone 102.5 g
REF 9417412 Sample container 100 x 65 mm with cover
REF 518063 Standard needle 2.5 g (up to 350 units)
REF 518081 Needle with shoulder 2.5 g, stainless steel



REF 9417582

ACCESSORIES (for consistency of petroleum waxes - ASTM D 1321)

- REF 941811** Outfit for consistency of petroleum waxes comprising : shouldered needle, container, weight &
REF 941816 Needle with shoulder 2.5 g, stainless steel
REF 941737 Cone holder, nickel-plated brass, movable, 47.5 g holder
REF 941815 Additional weight 50 g
REF 941820 Sample container with base plate
REF 21932 Needle 2,5g with certificate

ACCESSORIES (Penetration tests using one-quarter or one-half scale cone equipment - ASTM D 1403)

- REF 941742** 1/4 scale cone (9.38 g)
REF 941743 1/2 scale cone (37.5 g)
REF 27322 Spatula 30 x 200 mm
REF 9417421 1/4 scale grease worker (manual operation)
REF 9417431 1/2 scale grease worker (manual operation)

ORDERING INFORMATION

REF 942734
 NPN TECH For use on AC 230 V, 50 Hz - 1 A
 (W) 260x (D) 320x(H) 540 mm (± 23 kg)

CONTACT : sales@normalab.com

NORMALAB FRANCE SAS
 ZA Caux Multipôles 1 - F-76 190 Valliquerville
 Tel. : +33 232 700 100
 Fax : +33 232 704 732

www.normalab.com

NPN TECH leaflet 14rev1

DISTRIBUTED BY