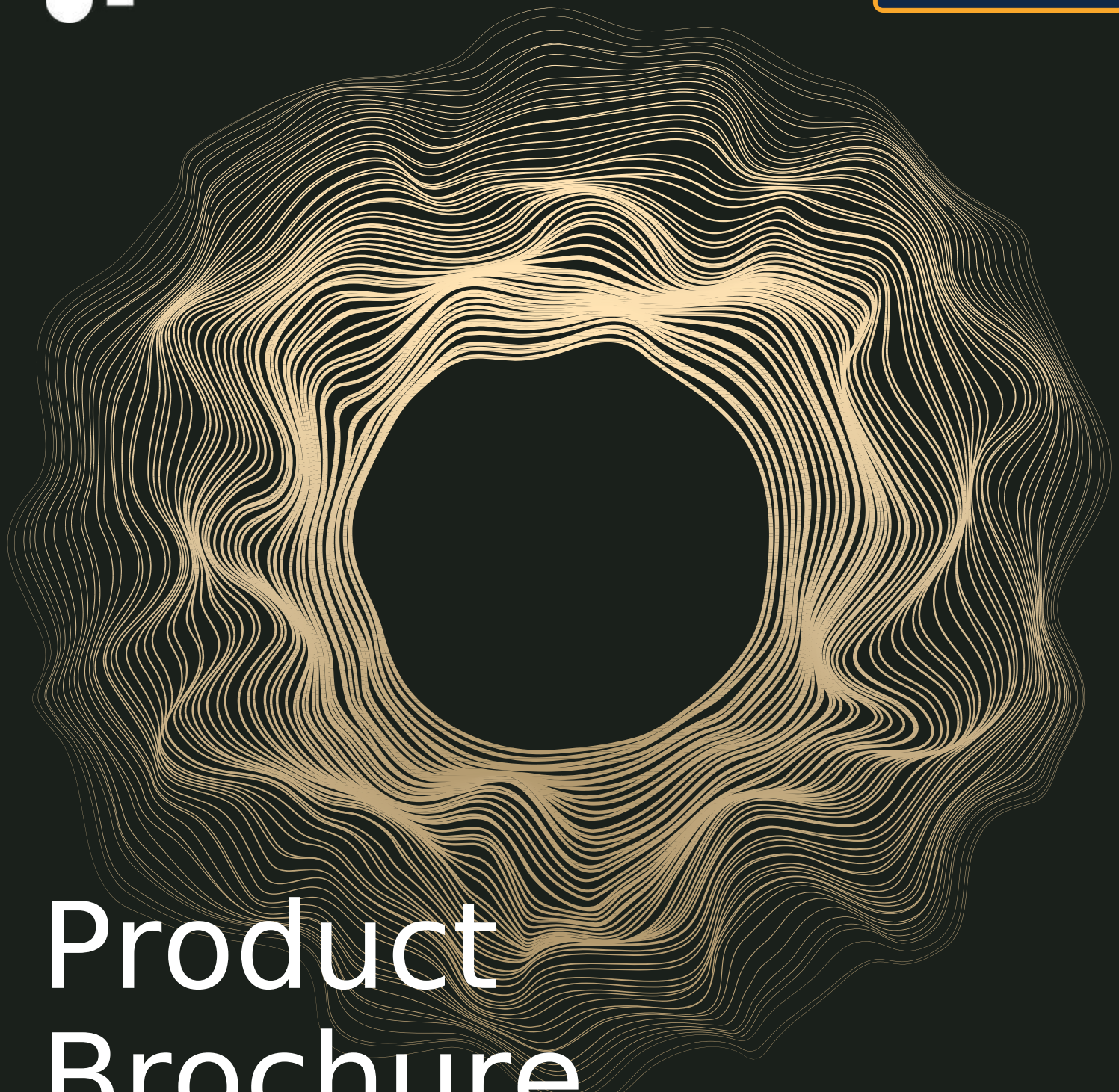


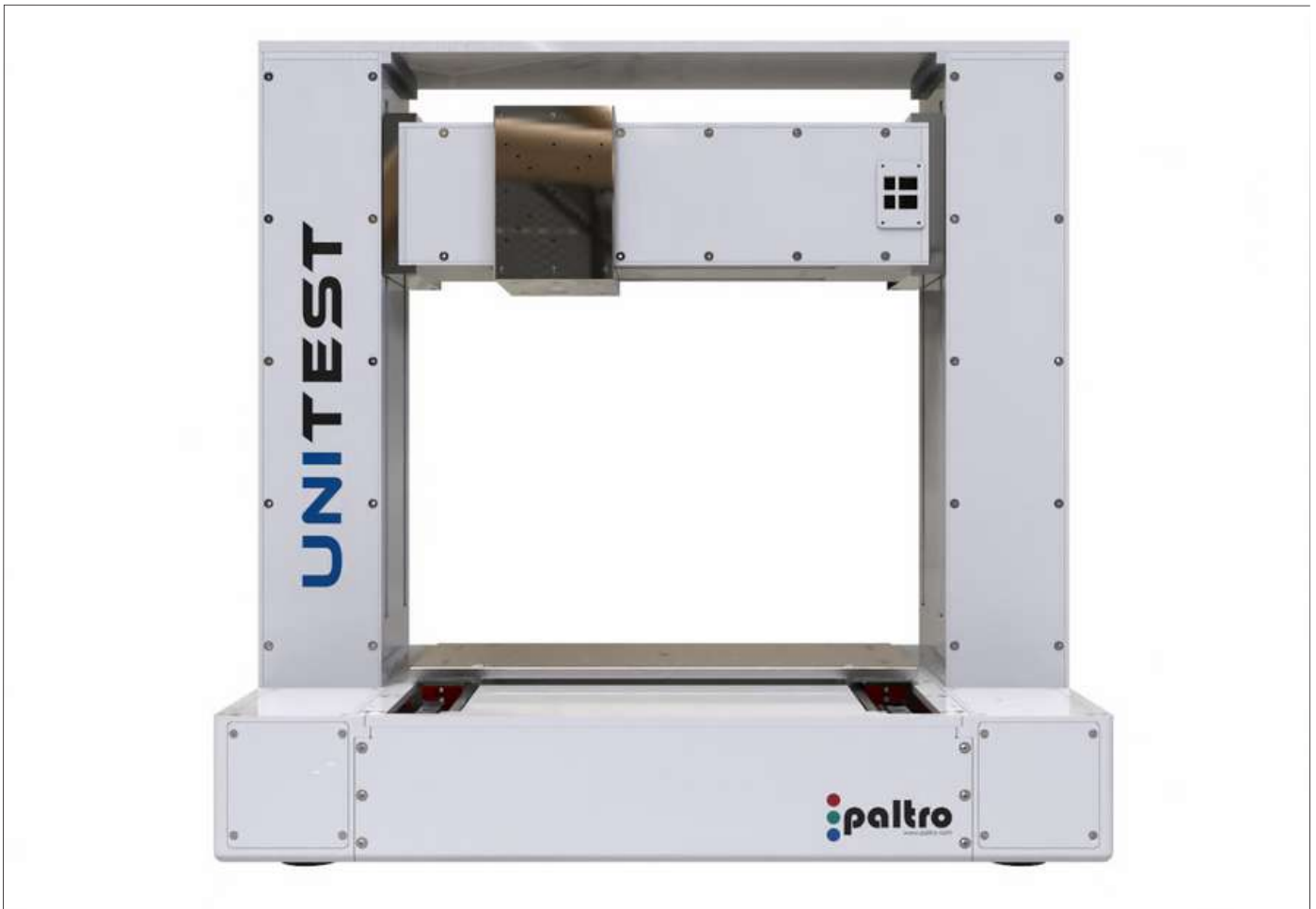


Prüfgeräte für Petrochemie,  
Gefahrgutanalytik und mehr



# Product Brochure

*UniTest 750*



## Platform

The UniTest 750 platform is the most capable modular test platform on the market. Its unparalleled force and motion capabilities make it ideal for any lab.

The UniTest 750 platform is our flagship system that offers industry leading specifications in a compact desktop form factor. It comes standard with high precision 3 axis positioning capabilities with fully digitally synchronized drives, a host of I/O ports, on-board power and plug-and-play functionality.

The platform has quick-lock mechanisms to aid fast interchange of sensors, motion modules and other compatible accessories making change over simple and tool free.

Our Lab-IQ software is easy to use, intuitive and eliminates the need for complex setup procedures, making the power of the UniTest 750 available to all users with ease.

# Capabilities

- Wear and Friction
- Scratch
- Indentation
- Film Thickness
- Cracks, defects
- Unidirectional Rotation
- Linear Reciprocation
- Fretting
- Pin on Vee
- Traction
- Thrust Washer
- Block on Ring
- Four Ball
- High Temperature
- Hot Hardness
- Low Temperature
- Tribocorrosion
- Lubricant Cup
- Humidity Controlled Environment
- 2D Digital Imaging
- 3D Profilometry
- Acoustic Emission Sensor (AE)
- Vibration Sensor
- Electrical Contact Resistance
- Noise

Run standard ASTM, DIN, ISO and custom tests on the same platform. Use real specimens and parts to bring your testing as close to your real life applications as possible.

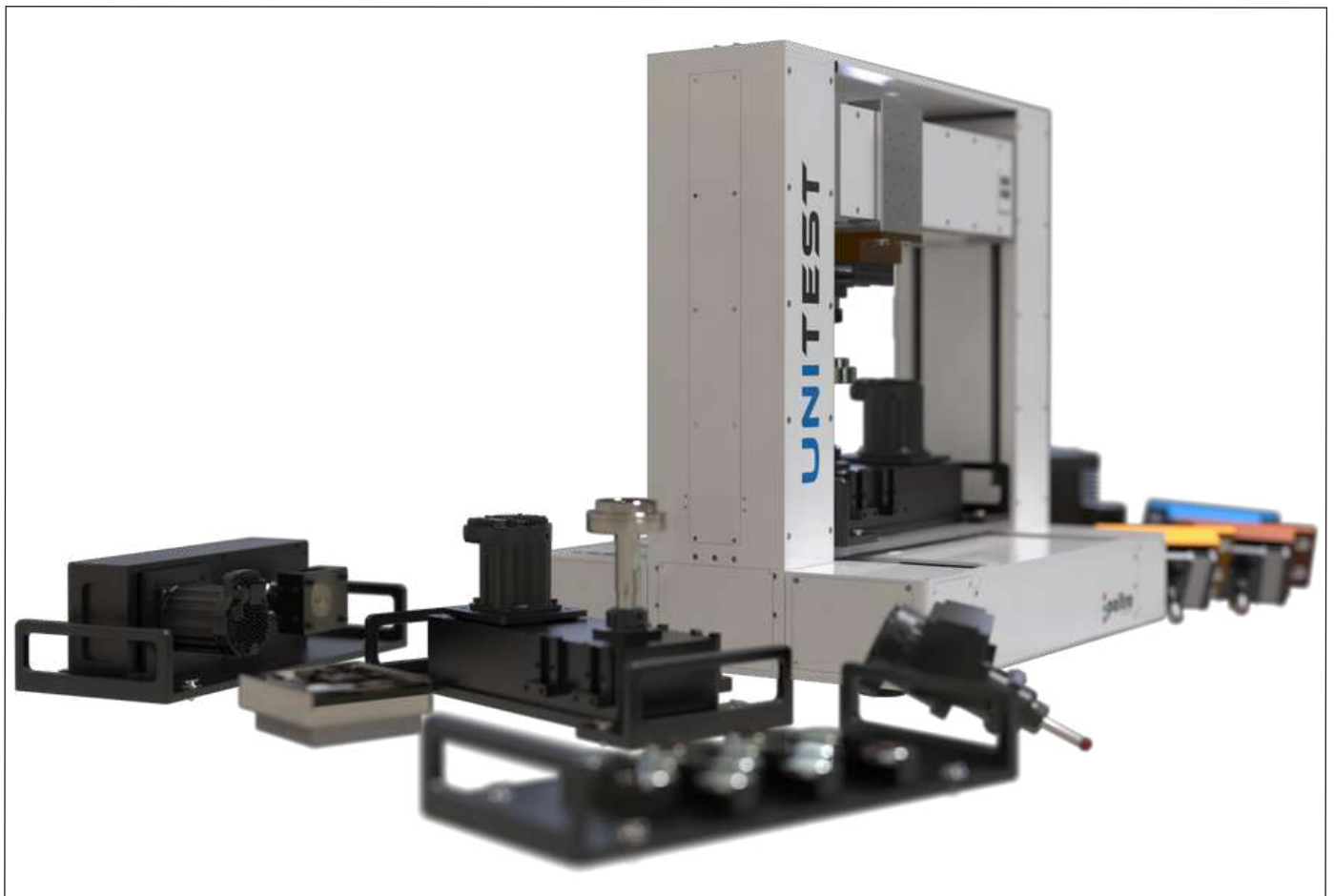
Take advantage of our ultra wide force application and sensing capabilities that range from mN to kN, with easy sensor changeovers.

Select from our wide range of motion modules to add on capabilities like Pin/Ball on Disk testing, Block on Ring, Linear Reciprocation, Scratch and much more.

Our imaging and surface profilometry options can be added on to scale with your measurement

needs. Choose from our 2D high-resolution imaging modules or add on a 3D surface profilometry system to create high resolution surface topographical maps.

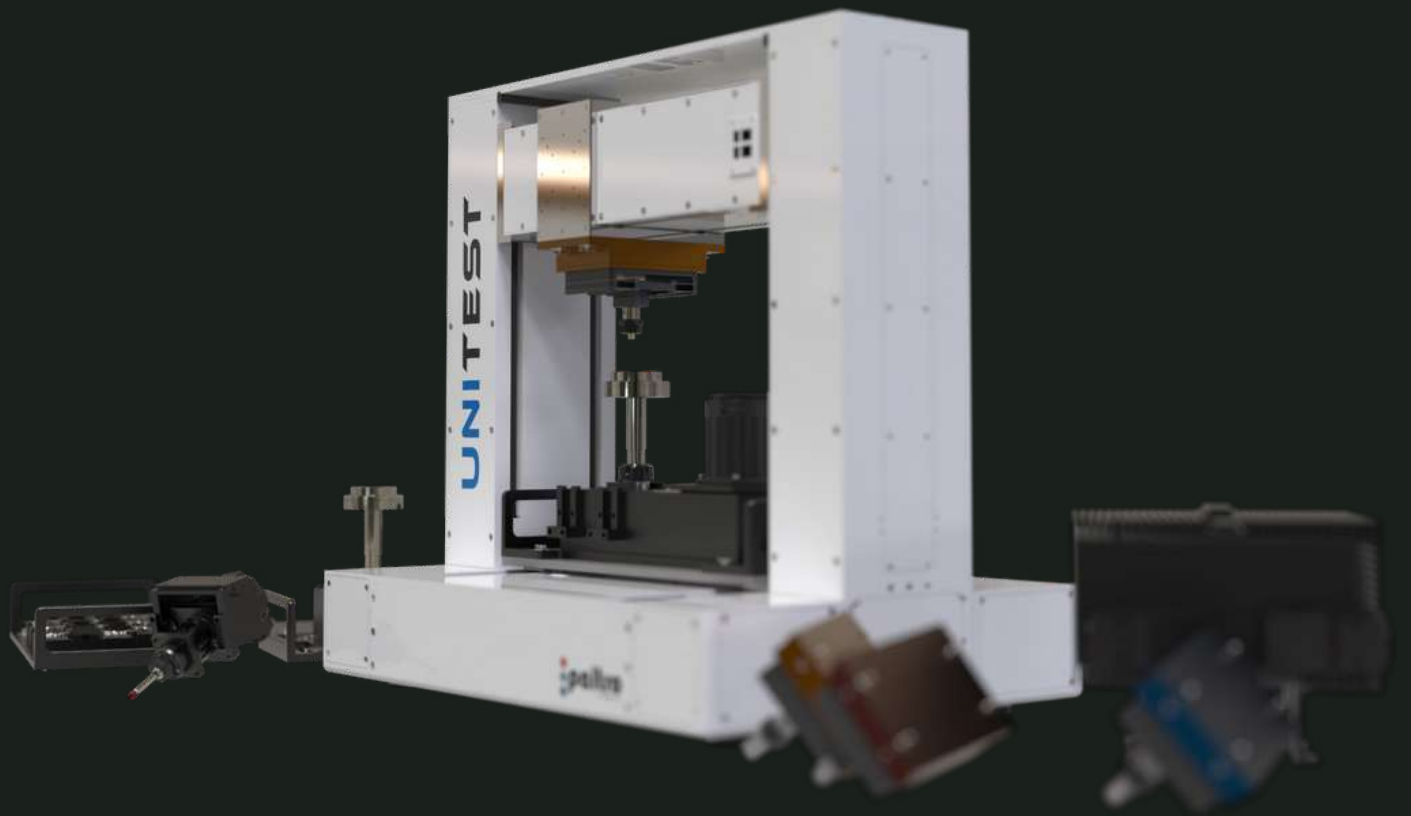
Our environmental options can add on capabilities from high temperatures to ultra low temperatures, corrosion, lubricant, humidity, and other special test environments.

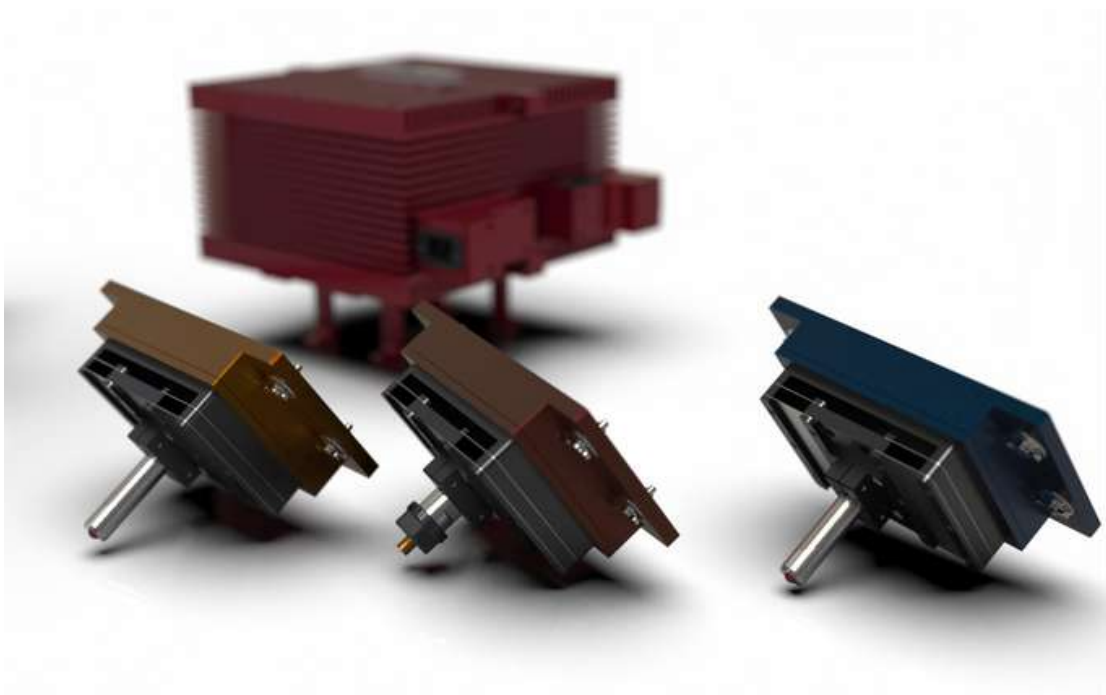


MODULES

# Our optional modules for sensing, motion, environment & more.

We offer a large selection of optional modules to expand the capabilities of your UniTest 750. In the following section, see some of our most popular modules.

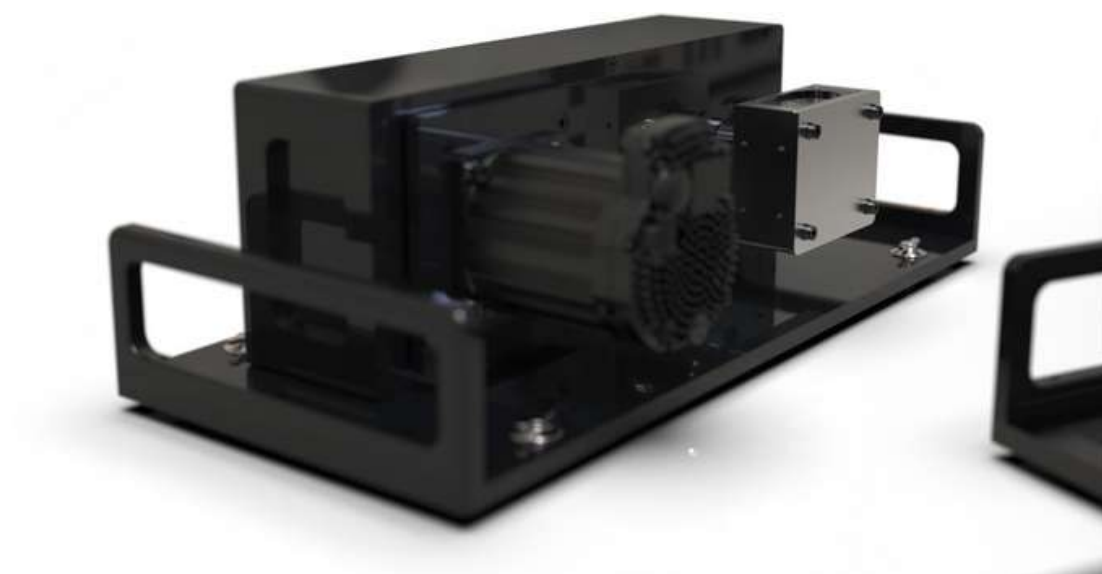




Industry leading force sensing capabilities with our MicroForce, DecaForce and KiloForce Load Heads.



Rotary Vertical (ROV) - Motion module for Pin/Ball on disk tests, thrust washer tests and much more.



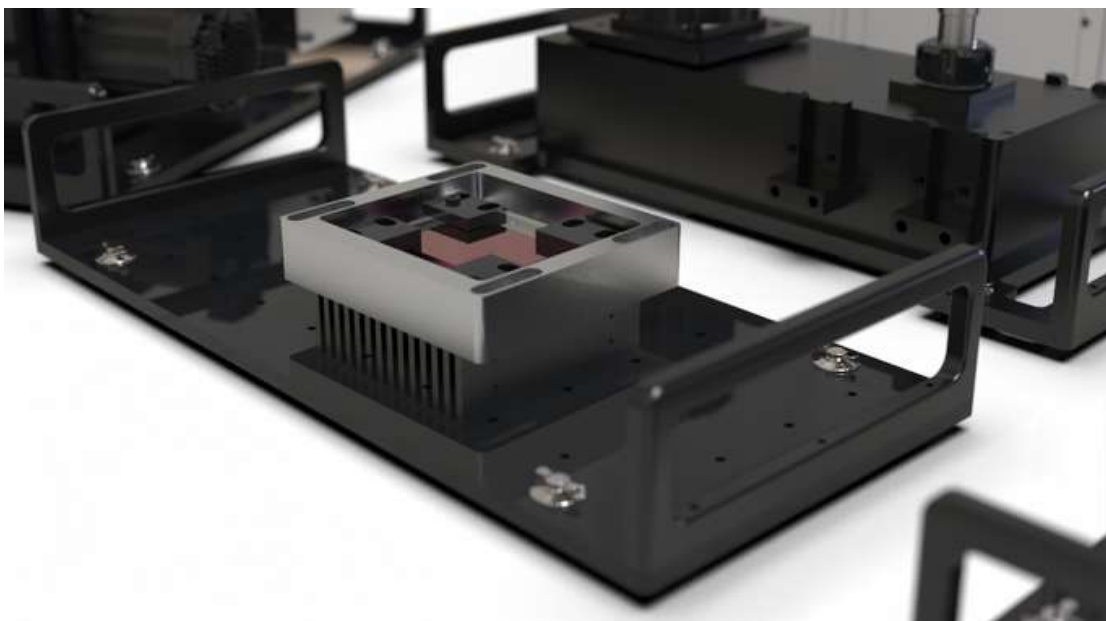
Rotary Horizontal (ROH) - Motion module for Pin, Ball, Block on cylinder tests, Ambient and high temperature lubricant chamber options are available.



Traction module for use independently or together with the ROV module for servo controlled roll and slip configuration. Ideal for traction studies on bulk materials, coatings and on lubricants.



ShapeShifter module with optional wedge clamp kit to hold numerous cylindrical samples. Also compatible with edge clamp kits, and numerous other optional modules like tribocorrosion, etc.



Sample holder module for linearly reciprocating tests. Compatible with edge clamp kits, heating platen, micro-climate adapter and more.



Compact, high temperature module that can be used to carry rotary and linear ball on disk tests, Rotary tests can be carried out when used with the optional Rotary Vertical Motion Module and linear tests can be carried out when used with the optional Sway Reciprocation Digital Module.



For a full list of modules, accessories, detailed specifications and configuration assistance, contact G-Labo technical sales.